

Easy Mailbox Tutorial

By **Reality Daydream**

Difficulty

Easy

Build this simple, yet chic, mailbox using our building plans!



Tools

Kreg Tools



[Kreg® Pocket-Hole Jig 720PRO](#)



[Adaptive Cutting System Saw + Guide Track Kit](#)



[Precision Router Table System](#)

Other Tools



[Table Saw](#)



[Orbital Sander](#)



[Impact Driver](#)



[Router](#)



[Pin nailer](#)



[Miter Saw](#)

Materials

Wood Products

- 1 1X8X8 , 3/4" X 7 1/4" X 96"
- 1 1X6X8 , 3/4" X 5 1/2" X 96"
- 1 1X4X8 , 3/4" X 3 1/2" X 96"

Hardware & Supplies

- 4 Rare Earth Magnets
- 1 Plumbers Chain
- 2 Eye Hooks
- 1 Mailbox Numbers
- 1 Titebond Outdoor Glue

Cut List & Parts

- 1 Top , 4 15/16 X 14 1/2 X 1/2"
- 2 Mailbox Sides , 16 1/4 X 3 1/2 X 1/2"
- 1 Back , 16 1/4 X 12 1/2 X 1/2"
- 1 Front Brace , 13 1/2 X 1 3/16 X 1/2"
- 1 Bottom , 12 1/2 X 3 X 1/2"
- 1 Front , 13 11/16 X 13 1/2 X 1/2"
- 1 Mail Holder Bottom , 11 1/4 X 2 3/8 X 1/2"
- 2 Mail Holder Sides , 12 9/16 X 2 7/8 X 1/2"
- 1 Back Inner Box , 11 1/4" X 12 9/16"

Directions

1

Plane Boards

Plane Boards to 1/2"



2

Rough Cut the Back, Front, and Mail Holder Back

Cut the 1X8 down to their rough dimensions (2 @ 17 1/4, 14 11/16, 13 9/16. Then glue and clamp them together

3

Finish Cut the Back, Front, and Mail Holder Back

Using an track saw we cut the boards to there final dimensions.



4

Cut Remaining Parts

Cut the remaining parts out of the 1x4 and 1x6.



5**cut the 20 degree bevels on the Back, Top, and Front Brace**

we used a table saw to cut the bevels.

6**Glue the Sides, Bottom, and the Back**

Using an outdoor glue, glue the sides bottom and Back together.

**7****Glue on the Front Brace**

Glue the Front Brace on, flush with the top edge of the sides.

8

Drill pocket holes

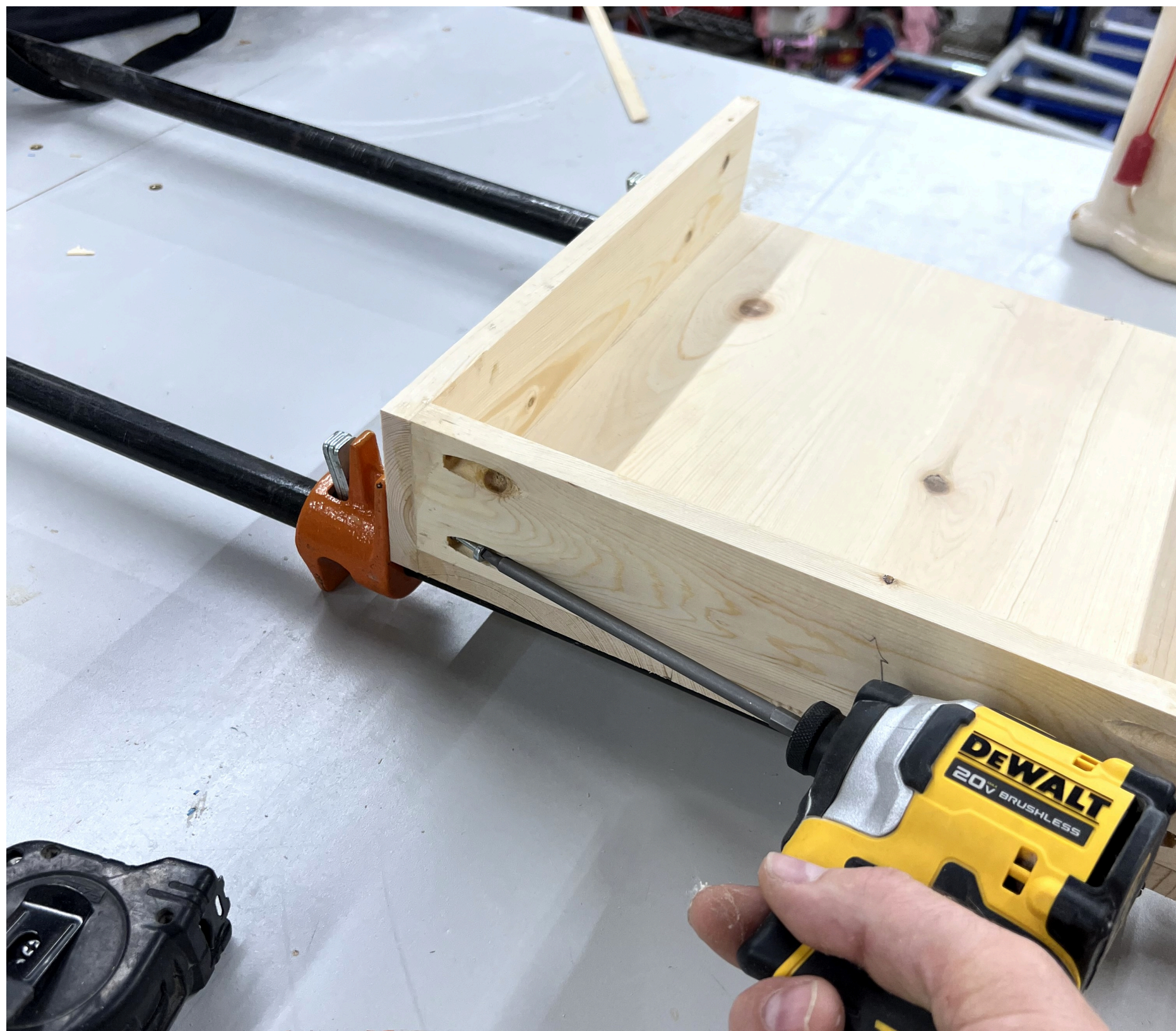
Drill pocket holes in the mailbox insert sides and bottom



9

Clamp, Glue, and Screw Mailbox Insert

Glue the Sides to the Back and Bottom on the Mailbox Insert, screw the bottom to the sides



10

Cutting Trim

we wanted to add trim to the front, you could buy this at the hardware store or make your own.



11

Glue and Nail Trim

Add trim to mailbox.



12

Sand & Paint

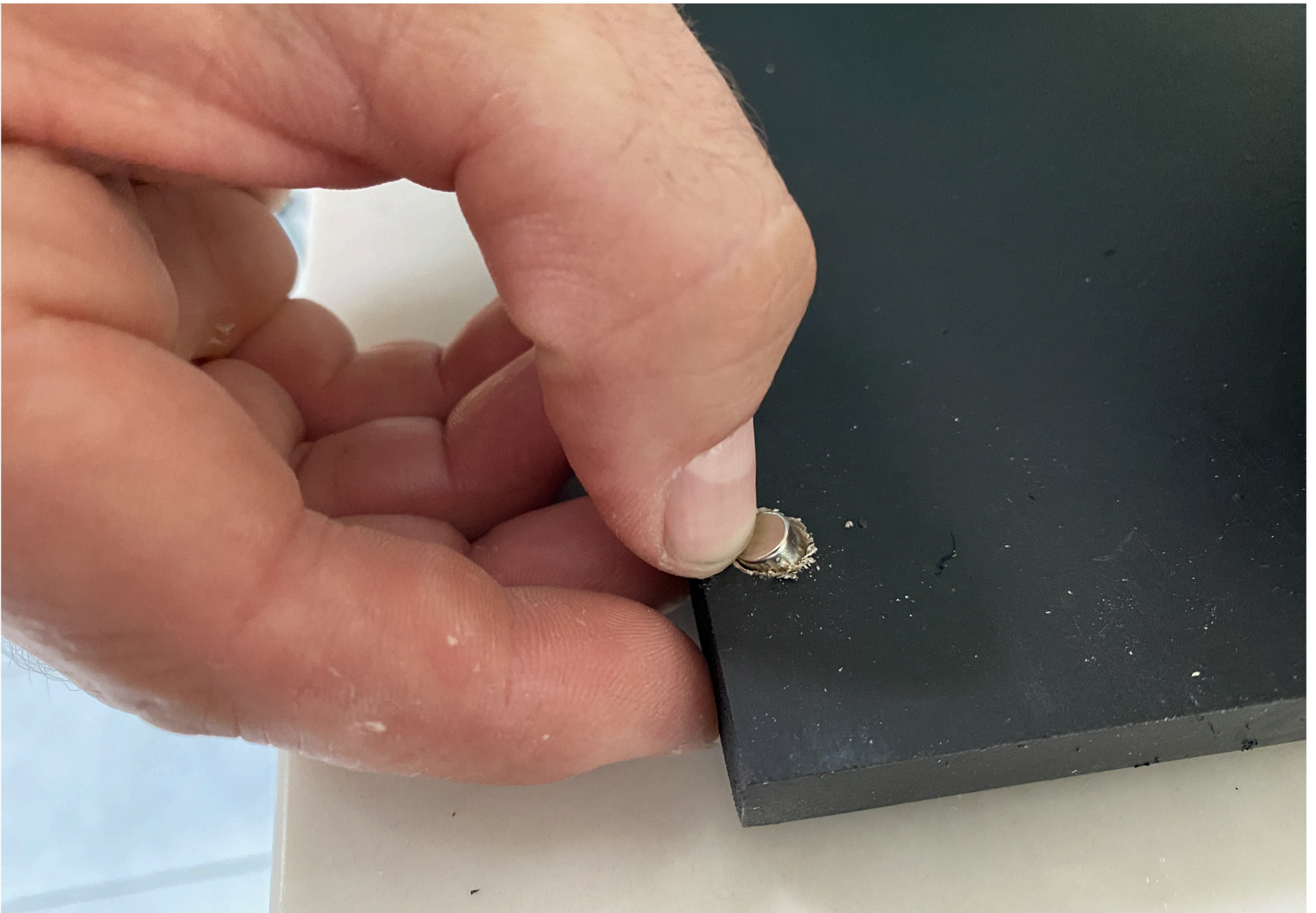
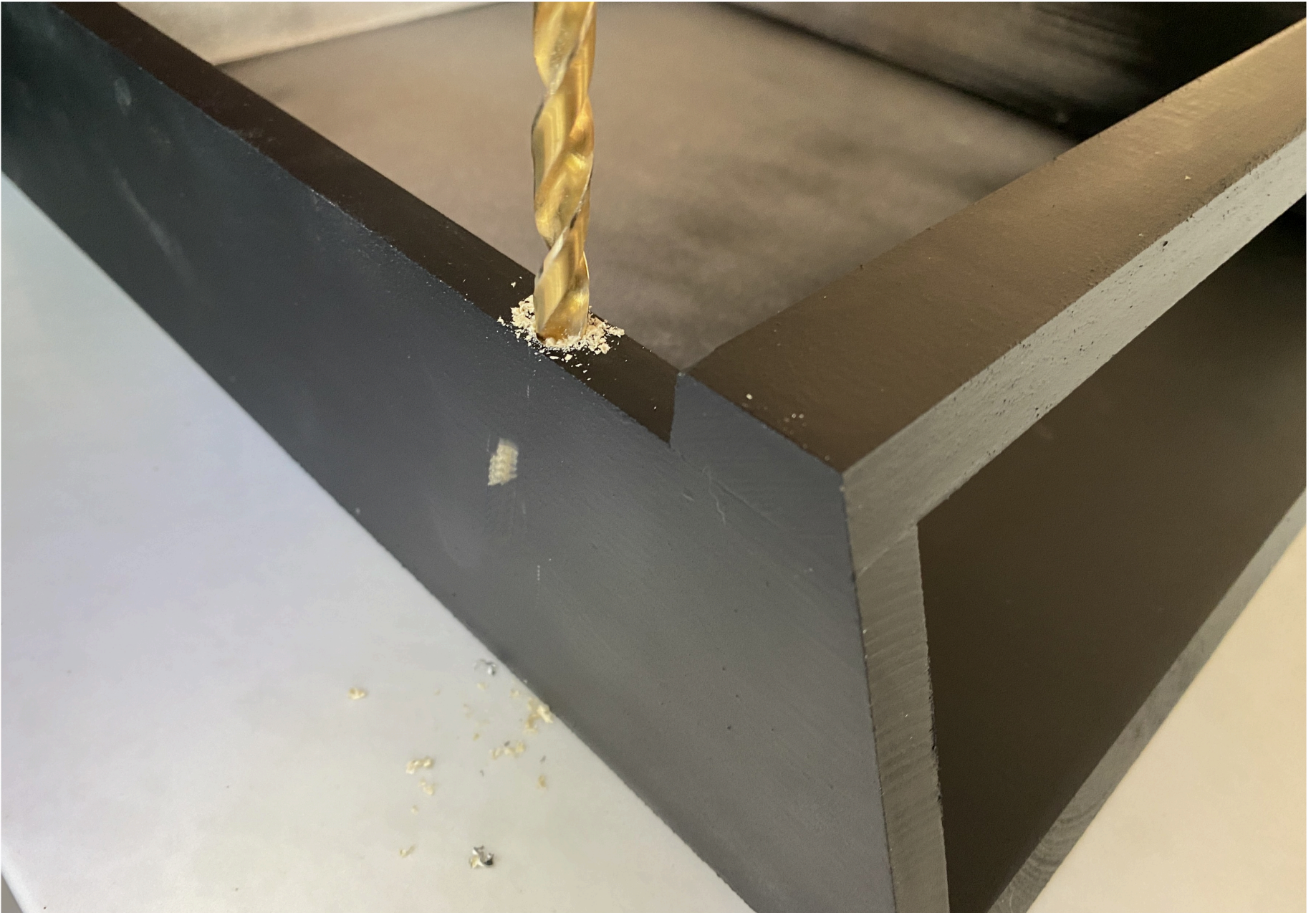
We sanded with an orbital sander, primed, and painted with an oil-based paint for maximum durability.



13

Install Magnets

Drill holes for your rare earth magnets, and glue them in place.



14

Assemble

Assemble mailbox!



15

Reveal!

Check out the final product!

